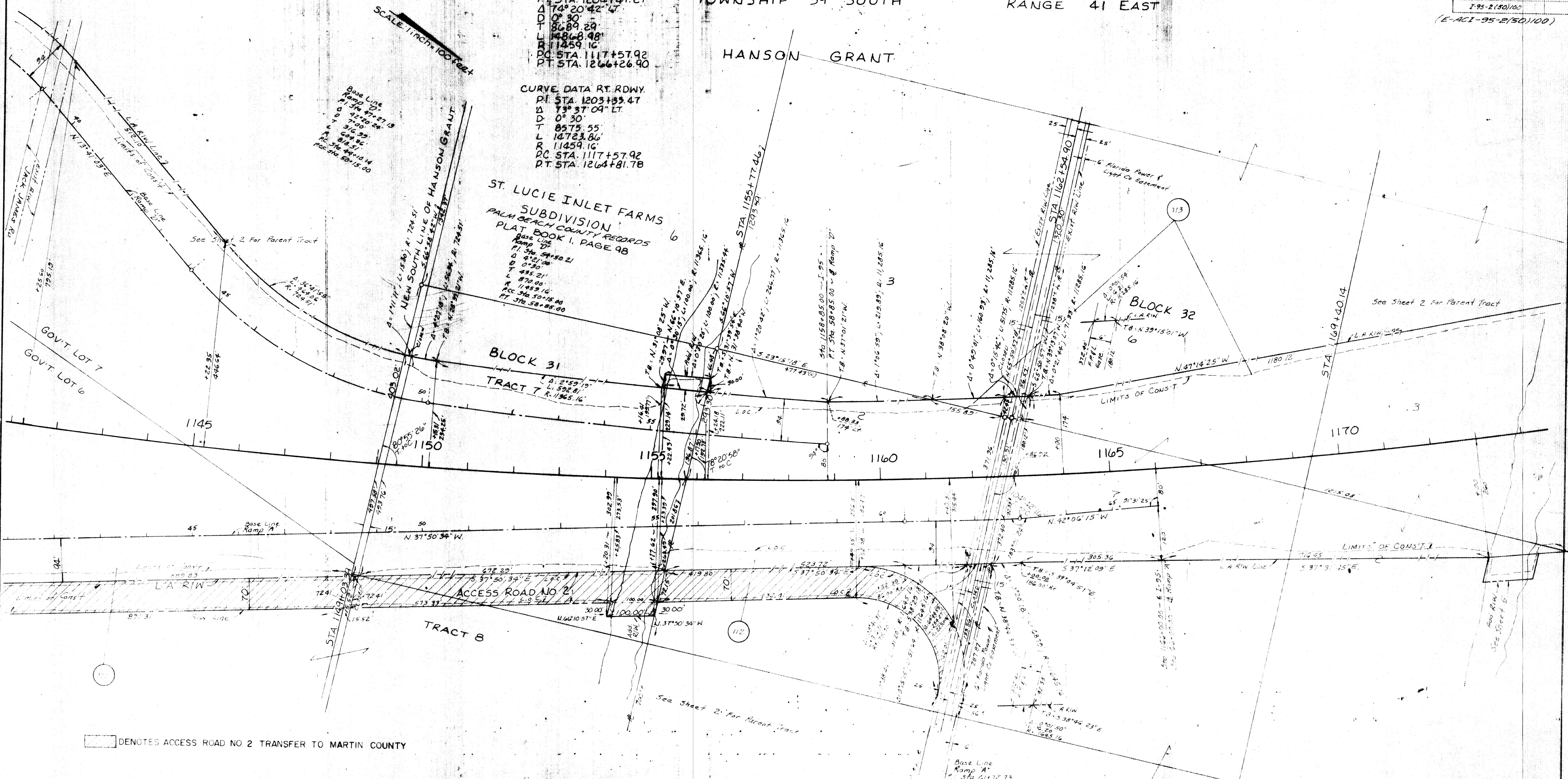


AF 2782

TOWNSHIP 39 SOUTH RANGE 41 EAST

F.A. PROJECT NO. 7-95-2(50)100 SHEET NO. (E-ACI-95-2(50)100)



CURVE DATA LT. RDWY.  
 PI STA 1204+47.21  
 Δ 174° 20' 42" LT  
 D 0° 30'  
 T 8689.29  
 L 14868.98  
 R 11459.16  
 PC STA 1117+57.92  
 PT STA 1266+26.40

CURVE DATA RT. RDWY.  
 PI STA 1203+53.47  
 Δ 73° 37' 09" LT  
 D 0° 30'  
 T 8575.55  
 L 14723.86  
 R 11459.16  
 PC STA 1117+57.92  
 PT STA 1264+81.78

ST. LUCIE INLET FARMS  
 SUBDIVISION  
 PALM BEACH COUNTY RECORDS  
 PLAT BOOK I, PAGE 98  
 Base Line  
 Ramp A  
 PI STA 1155+77.46  
 Δ 174° 20' 42" LT  
 D 0° 30'  
 T 8575.55  
 L 14723.86  
 R 11459.16  
 PC STA 1117+57.92  
 PT STA 1264+81.78

Denotes Access Road No 2 Transfer to Martin County

"This right of way map when recorded is an instrument of conveyance, transferring in accordance with Florida Statutes 337.29 (1977) all right, title, and interest of the Florida Department of Transportation in the road, street, highway, set forth on this map to County."

Recorded in Public Records of County, Florida, this day of A.D. 19 in Road Plat Book Page 79

Clerk of Circuit Court  
 County, Florida

FLORIDA DEPARTMENT OF TRANSPORTATION  
 RIGHT OF WAY ENGINEERING SECTION  
**RIGHT OF WAY MAP**  
 STATE ROAD NO. (I-95) 9 MARTIN COUNTY  
 DRAWN BY RBS 1-5-81  
 CHECKED BY WAG 6-15-82  
 DISTRICT OFFICE  
 SECTION 89095-2412 SHEET 4  
 SCALE 1 inch = 100 feet

Plat Book 12 pg 79 SHEET 4 OF 6 FOR ROAD TRANSFER PURPOSES